



Installation for HVAC Ducts Applied Directly (R-Value 4.2) Applied with Air Spaces (R-Value 6.0 & 8.0)

Please read and follow all of the steps below to ensure proper installation.

Note: Upon receipt of your bubble insulation, store in a dry covered location; leaving the bubble insulation exposed to the outdoor elements can cause the aluminum to corrode and potentially reduce its effectiveness at blocking the maximum amount of radiant heat possible.

Products Suggested:

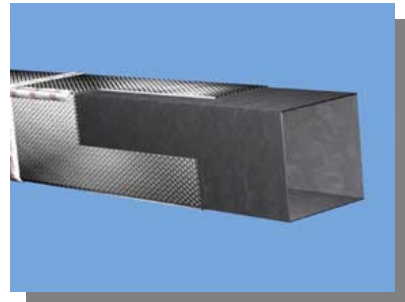
- Radiant GUARD® Double Reflective Bubble reflective insulation

Materials Needed:

- Tape Measure
- Utility knife or scissors
- Aluminum foil tape

Instructions Applied to Duct (R-Value 4.2):

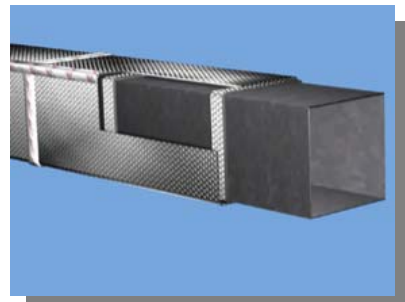
1. Make sure all metal joints, seams, and penetrations are sealed.
2. Verify circumference of the duct.
3. Cut the bubble insulation to the circumference length plus 1".
4. Wrap the bubble insulation around the duct and securely tape the linear and circumference seams (overlapping by 1") with UL181 approved aluminum tape. The goal is to achieve an air-tight snug seam seal.



NOTE: Do not leave any exposed duct or space where air can enter between the duct and the insulation.

Instructions Applied with 3/4" space (R-Value 6.0):

1. Make sure all metal joints, seams, and penetrations are sealed.
2. In order to obtain an R-Value of 6.0, a 3/4" air space is required between the duct and the insulation. This can be achieved by cutting 2" width strips from the insulation and double wrapping around the duct every 24".
3. Verify the circumference of the duct at the mid-point of the 2" width spacer strip.





4. Cut the bubble insulation to this circumference length plus 1”.
5. Wrap the insulation around the duct and securely tape the linear and circumference seams (overlapping by 1”) with UL181 approved aluminum tape. The goal is to achieve an air-tight snug seam seal.

NOTE: Do not leave any exposed duct or space where air can enter between the duct and the insulation.

Instructions Applied with 3/4” space (R-Value 8.0):

1. Same instructions as above except a second layer of double-wrapped strips are attached to the outer of the bubble insulation wrap so that a second 3/4” air space can be created before a second bubble insulation wrap is applied.